

Topic

Conversation for Beginners

Lesson 7

Large Types of Transportation



- What are these?
- Do buses take passengers?

In this lesson, we will learn to **talk about some large types of transportation:**

- name some forms of large types of transportation;
- describe how to take each form of transportation;
- practice expressions to talk about some forms of large types of transportation.

Key words:

bus

train

ship

airplane

Key Words

Learn the new words and match.



- train
- airplane



- ship
- bus



Vocabulary Check

Complete the sentences with the correct form of transportation.



Different Transportation

bus

ship

train

airplane

1. Their family took an _____ when they went to another country.
2. Jane waits for the school _____ to fetch her from home every day.
3. The _____ leaves the platform at 9:00 tomorrow.
4. Children usually feel seasick when they are on a _____.

Key Sentences

Read and share your opinions.

1. I take the **bus** to school every day.

Questions:

1. How do you go to school?
2. Do you like taking the bus or the train to school?
Why or why not?



Key Sentences

Read and share your opinions.

2. How do we take an airplane?

Questions:

1. How do you ask someone how to take a kind of transportation?
2. How often do you take an airplane?



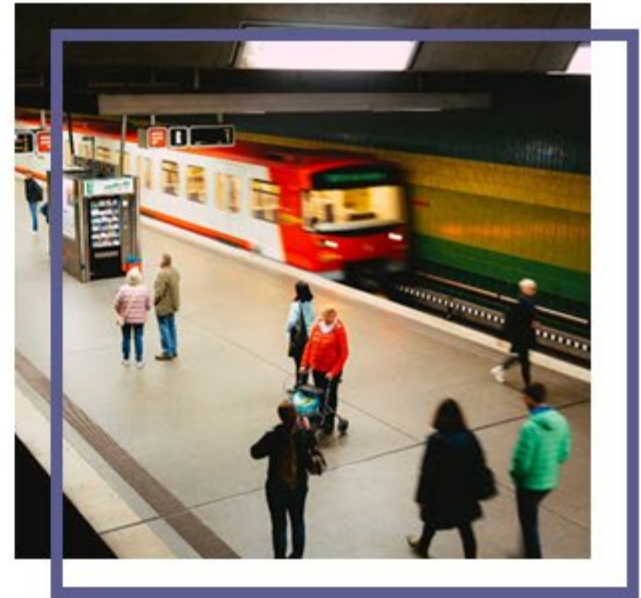
Key Sentences

Read and share your opinions.

3. We go to the subway station to take the **train**.

Questions:

1. How do we take the subway?
2. What do people usually do when taking the subway?



Key Sentences

Read and share your opinions.

4. I sometimes feel seasick when I'm on a **ship**.

Questions:

1. What do people sometimes feel when they're on board a ship?
2. What do we do to avoid feeling seasick?



Conversation

Listen to the audio and do a role play.

Yuka is asking John about taking the train.



Yuka

How do you go to school?



Yuka

How do we take the train?



Yuka

How do you feel when you're on the train?



John

I take the train to school every day.



John

We go to the subway station to take the train.



John

I sometimes feel dizzy when I'm on the train.



Semi-open Role Play

Make a role play with your teacher with the given scenario and hints.

Scenario

You and your friend are traveling out of town and you're taking a ship. Talk to your friend about riding the ship for the first time.

- Hints:**
- How do we take a/an ...?
 - We go to the...to take the ship.
 - I sometimes feel...when I'm on a...

Review

Fill in the blanks with the correct words you learned from this lesson.



Different Transportation

People use different forms of transportation. Students sometimes take the school b_____ to go to school. Adults take the subway t_____ to go to work. When people go to another city or country, they either go to the airport to take the a_____ or to the seaport terminal to take the s_____. People use these vehicles for traveling to near or far places.