



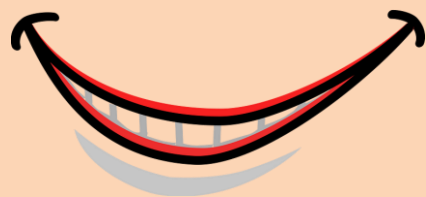
Topic

Conversation
for Idioms

Lesson 29
Difficult Situations

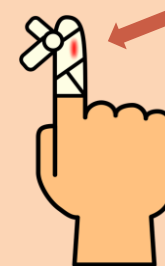
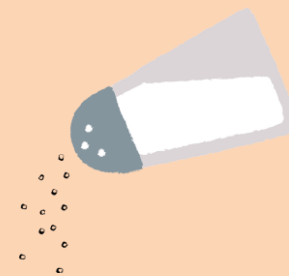
Lead-in

Complete the idioms based on the pictures.



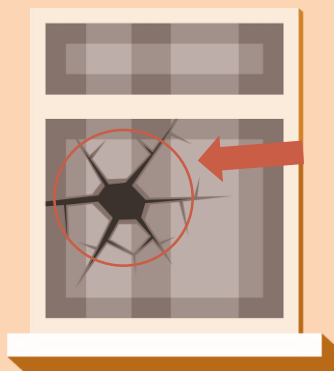
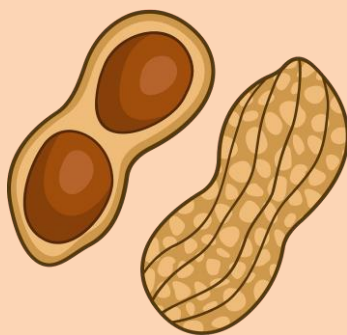
and

it



rub

in someone's



a tough

to



the tip of the

1. He doesn't agree with his friend's plan on going to the beach, but all he can do is **grin and bear it**.

- Q** Which is **true** about the statement?
- a. Danny doesn't like his friend's plan, so he can only accept it.
 - b. Danny always goes to the beach with his bear and plays with it playfully.



2. They tried to solve the incident yesterday but it was **a tough nut to crack**.

Q What are some problems that can be considered a tough nut to crack?



Origin

The origin of “a hard nut to crack” is somewhat unknown. Yet, people have discovered that this is an early metaphoric idiom. It is a reference to a strong nutshell (like a walnut) and how stiff it is when you try to open it.

3. John's girlfriend broke up with him right after he lost the basketball championship. She really **rubbed salt in his wounds**.

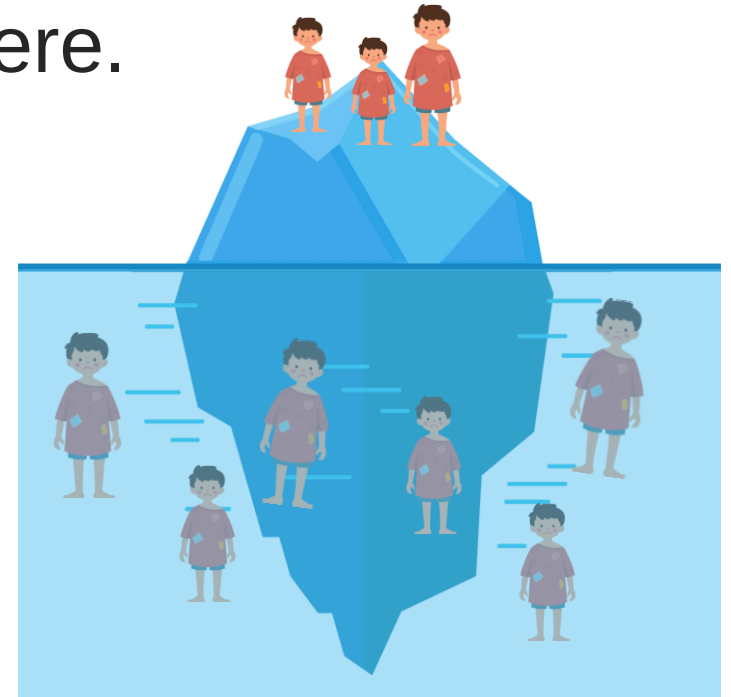
Q When do we use the idiom?

- A** when we find solutions to the problem
- B** when we make a difficult situation even worse
- C** when we ask advice from someone



4. Those homeless kids that we visited yesterday in the slums were just **the tip of the iceberg**. There were still thousands of kids out there.

- Q** What does the idiom mean?
- It means to accept a bad situation.
 - It means a small part of the problem.





Difficult Situations

grin and bear it
accept a bad situation
without complaining

a tough nut to crack
a problem or situation
that's difficult to deal with

**rub salt in
someone's wounds**
make a bad situation
feel worse

the tip of the iceberg
a small, visible part of
the problem

Practice

Choose the correct idiom to complete the sentence.

- 1 I found sewing **(a tough nut to crack, grin and bear it)** because I couldn't hold the needle properly.
- 2 Joan's success was just **(the tip of the iceberg, a tough nut to crack)**. She fought very hard to get into the position, and we didn't see that.
- 3 He really doesn't want to go to the park because it's boring, but he has to **(grin and bare it, grin and bear it)**.
- 4 I accept that he was right and I was wrong, but the way he talked is just **(rubbing salt in my wounds, rubbing sugar in my wounds)**.

grin and bear it

rub salt in someone's wounds

the tip of the iceberg

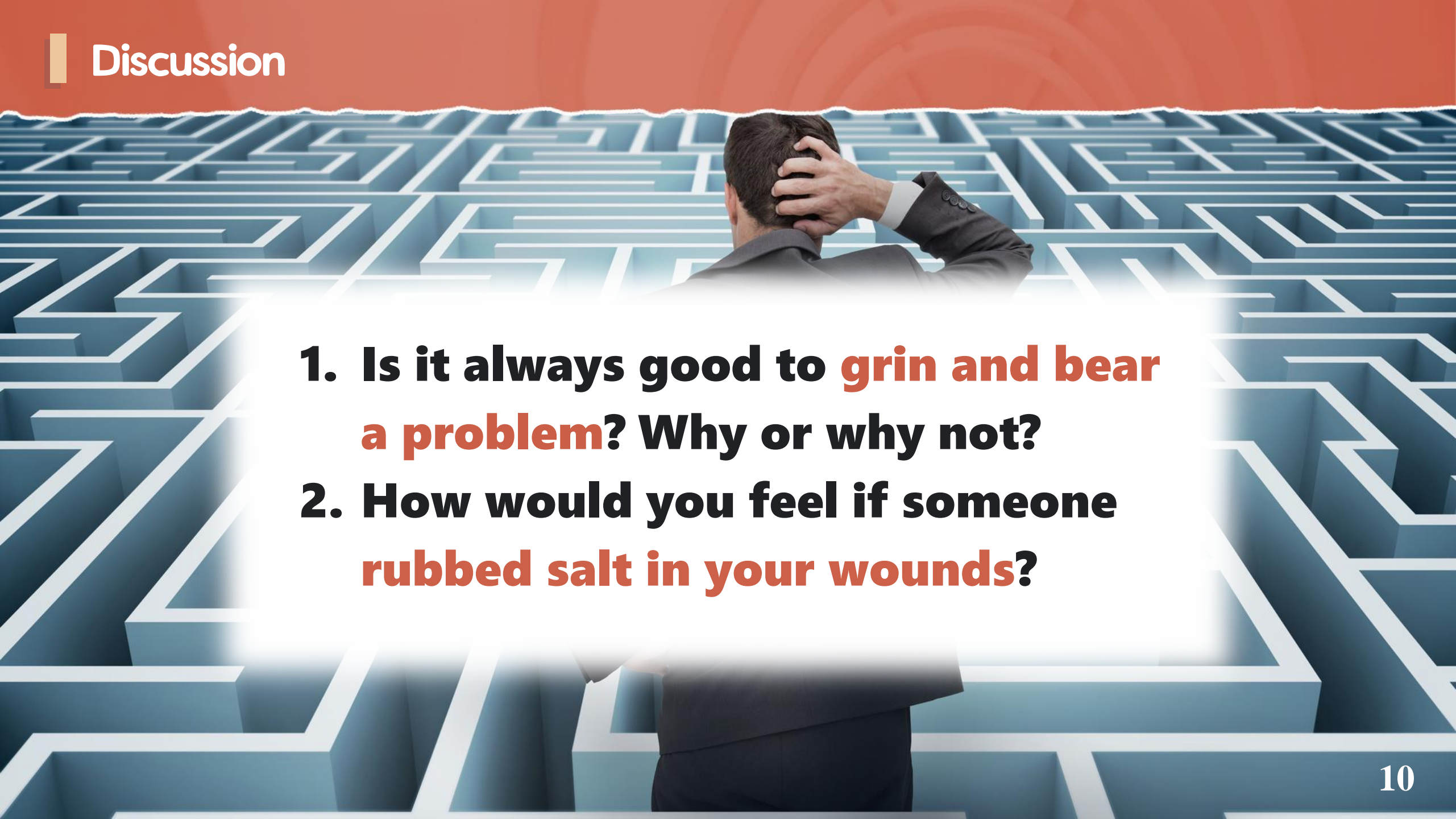
a tough nut to crack

1. It wasn't just the living room that was messy. The rest of the house was in a bigger mess.

2. It's really difficult for Steven to defeat his friend in chess.

3. Whenever Tom's mom makes a decision, he just accepts and follows it because he can't do anything about it.

4. John lost the tennis match. His sister made it worse when she called him a loser.

- 
- A man in a dark suit is seen from behind, standing in the center of a large, complex maze. He has his right hand on his head, suggesting confusion or frustration. The maze is made of light blue walls on a darker blue floor. The background is a solid red color with a faint circular pattern.
- 1. Is it always good to grin and bear a problem? Why or why not?**
 - 2. How would you feel if someone rubbed salt in your wounds?**